



Competitive Power Ventures



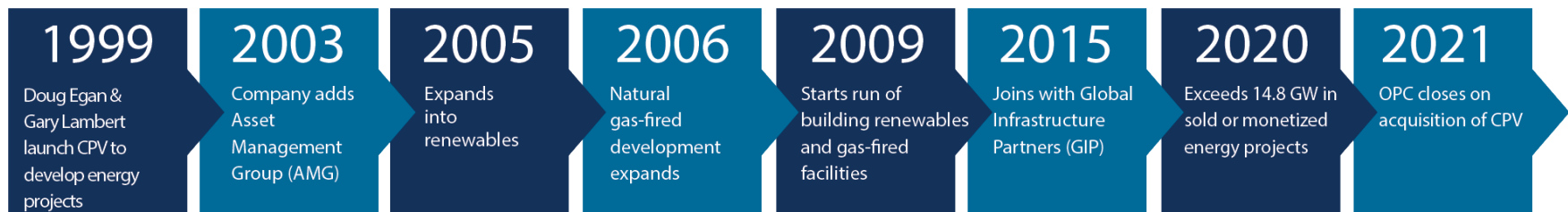
CPV Investing in Garrett County

March 16, 2021

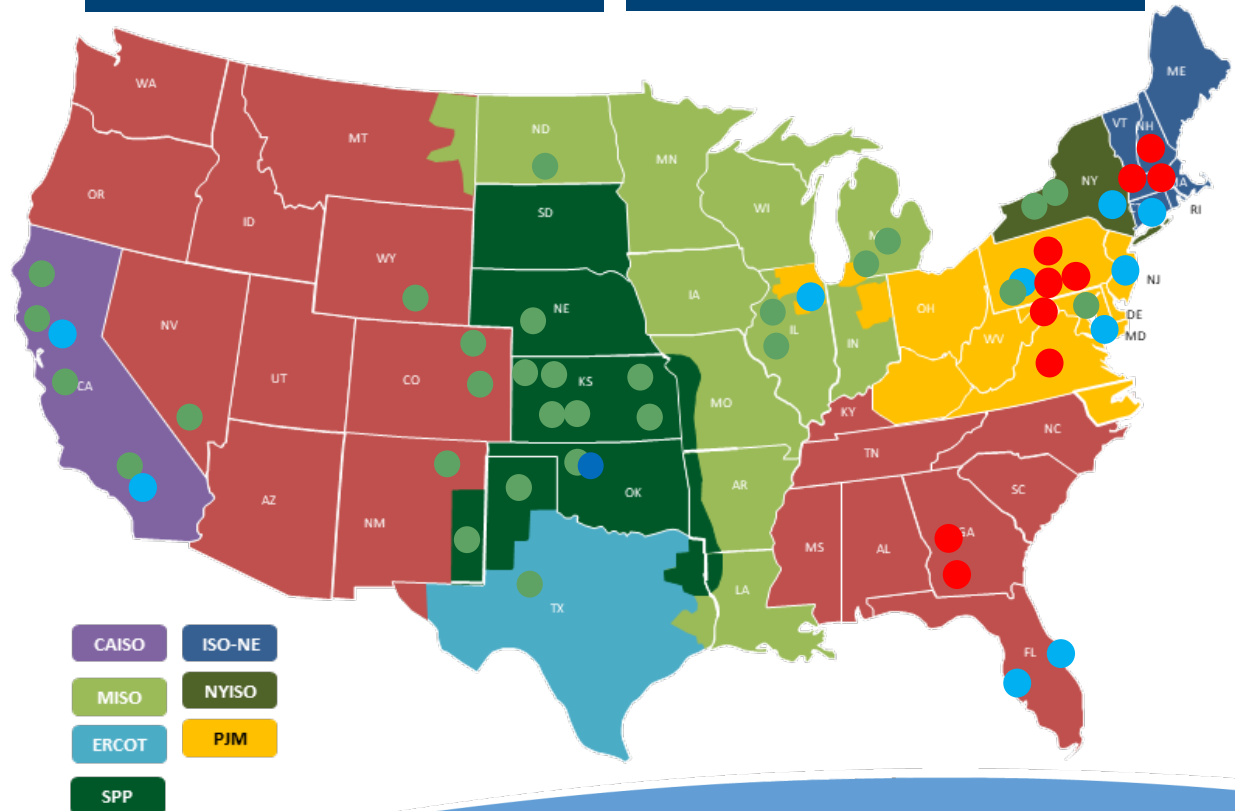
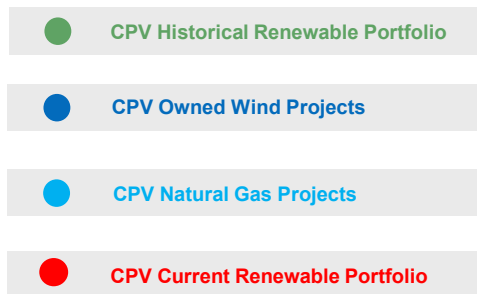
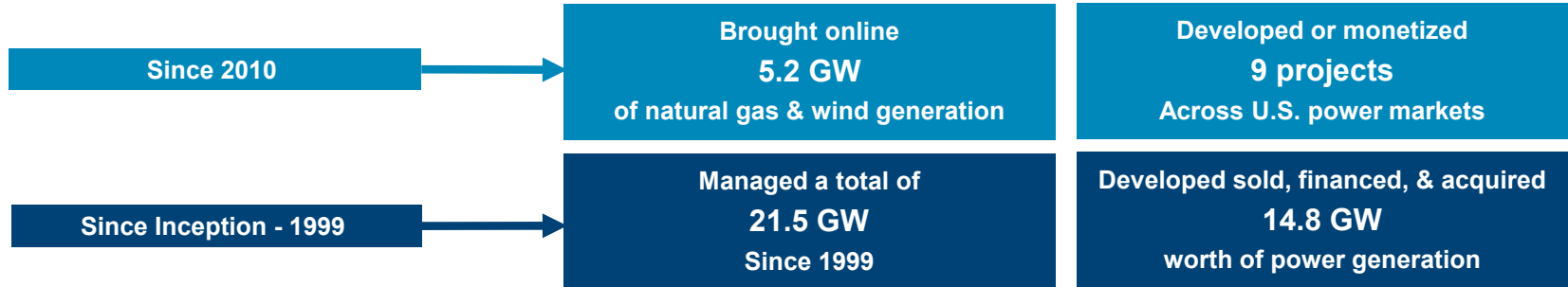


Who We Are

- Premier North American developer, owner and manager of **electric generation facilities**
- Partnered with **OPC Energy** in 2021
- **Providing responsible energy** by working with our communities and partners who trust us **to solve their energy challenges**
- Using cutting-edge technologies to **provide the most environmentally responsible**, highest performing solutions



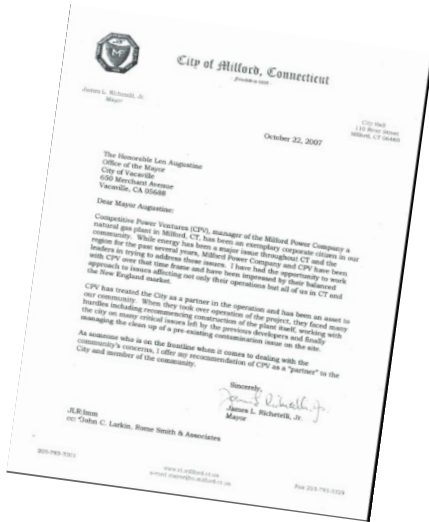
CPV's Development Track Record



Similar Solar Facility Examples



What Host Communities Say About Working with CPV



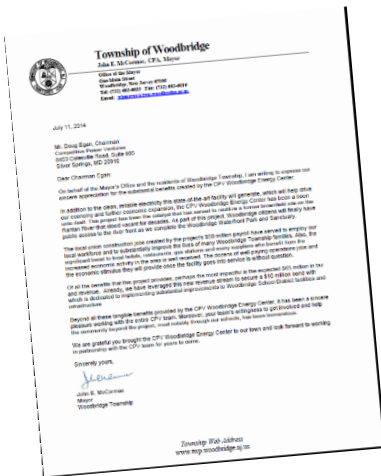
"The St. Charles Energy Center project is one of the largest economic development projects in Charles County's history. A project that involves capital investment of over a half-billion dollars is enviable for any jurisdiction. Some 15-plus years of time and planning has been invested by many to reach this milestone, and we are so pleased that CPV has completed their financial closing and is moving toward construction."

— **Kwasi Holman, Director, Charles County's Economic Development Department**



"During my 8 years on the school board, I have not witnessed anything like CPV's genuine interest in becoming a stakeholder in the local education system. They have embedded themselves in our District, and have provided learning opportunities and resources that we formerly thought were well-beyond our limitations."

— **Dennis Simmer, Central Cambria School District Board Member**



"Beyond all these tangible benefits provided by the CPV Woodbridge Energy Center, it has been a sincere pleasure working with the entire CPV team. Moreover, your team's willingness to get involved with the community beyond the project, most notably through our schools, has been tremendous."

— **John E. McCormac, Mayor, Woodbridge, NJ**



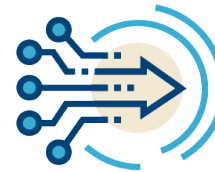
CPV BACKBONE SOLAR PROJECT DEVELOPMENT





Type of Facility:

- ✓ 175 MWac solar photovoltaic project
- ✓ > \$200 million privately-funded infrastructure improvement



Electrical Interconnection

- ✓ On-site Potomac Edison transmission line
- ✓ No new transmission lines required



Planned Timeline:

- ✓ Start of Development – March 2020
- ✓ Start of construction ~ Q2 2022
- ✓ Project operation ~ mid-2023



Permitting

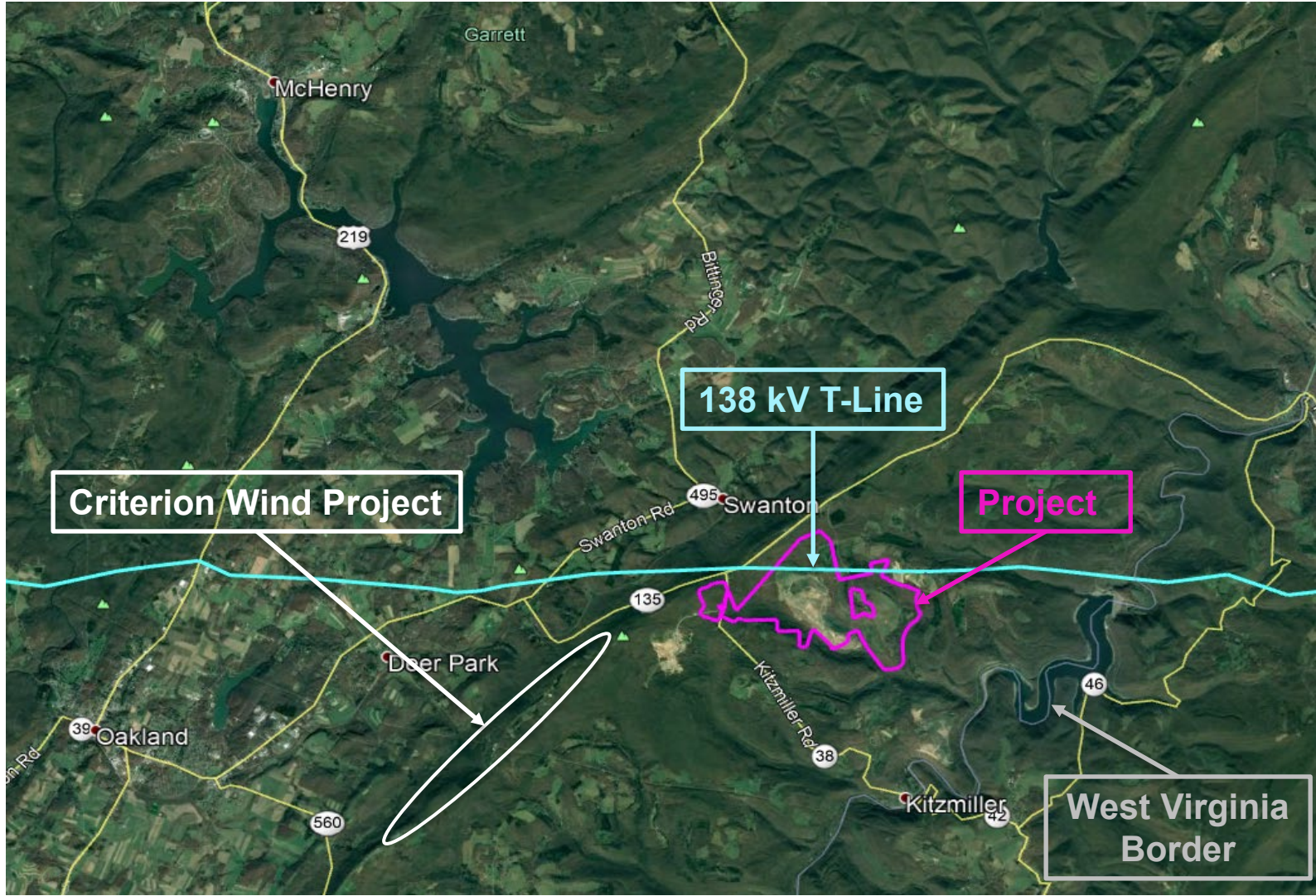
- ✓ County, state and federal approvals required
- ✓ Great engagement with local officials and organizations as well as state officials and agencies



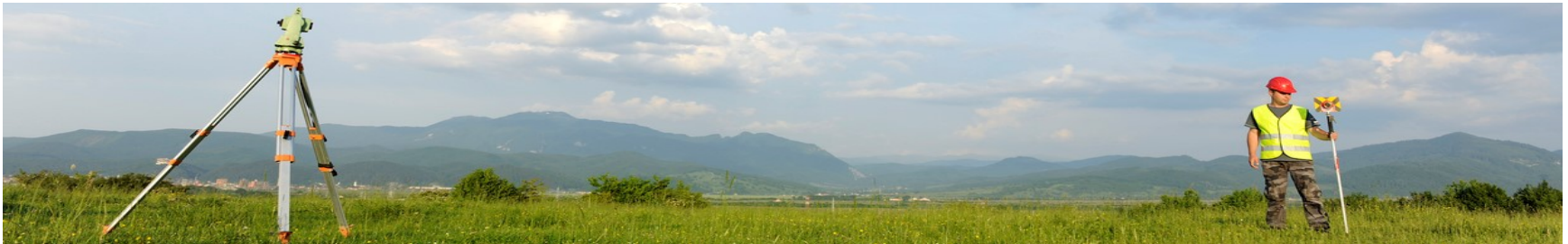
Location:

- ✓ North of Kitzmiller, MD and adjacent to Criterion Wind Project
- ✓ Former Vindex/Arch Coal mining site – significantly disturbed property

Project Location

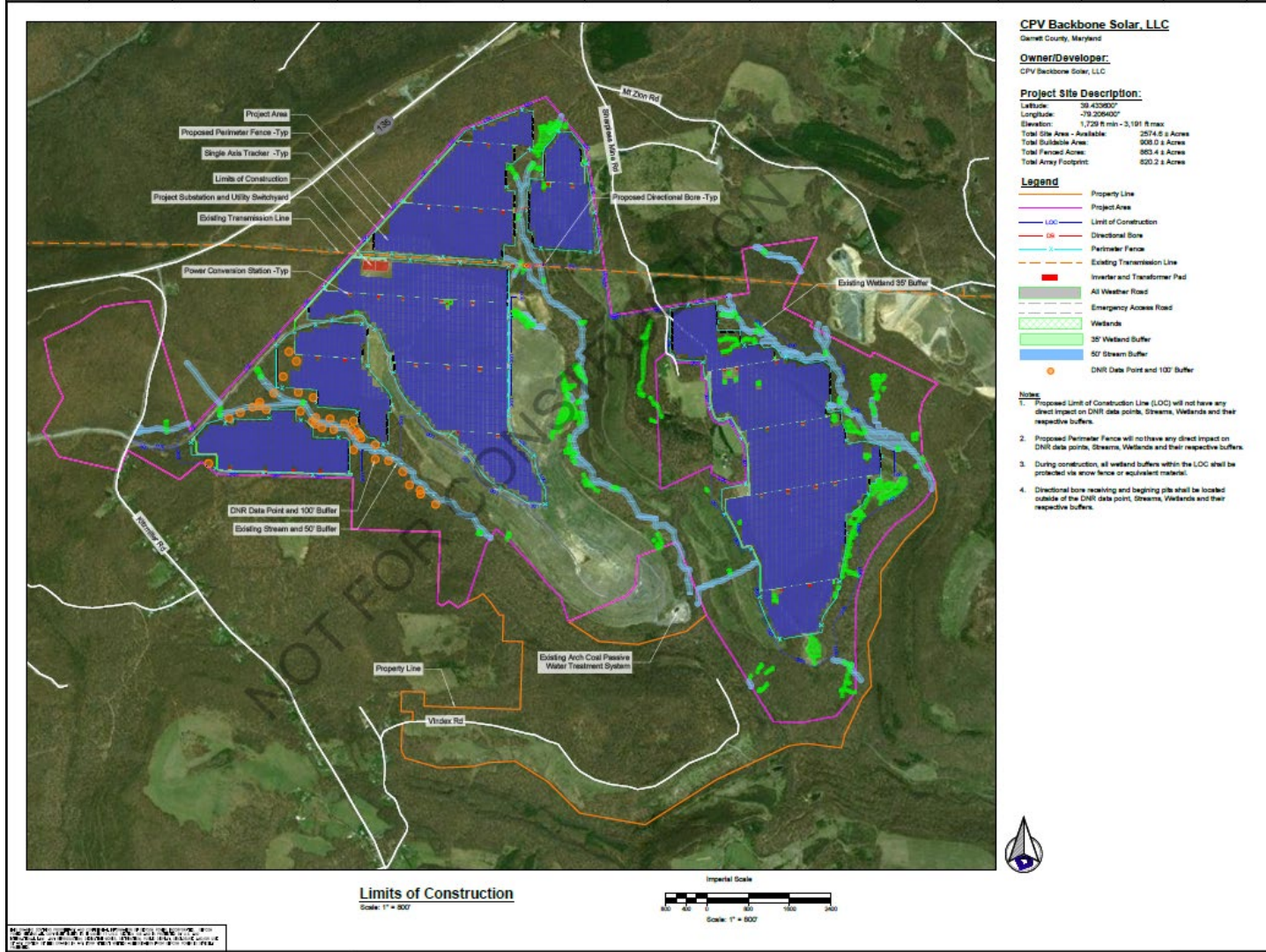


Completed and Continuing Work



| Permit, Authorization or Study | Agency or Consultant | Status | Target Completion Date |
|--|---------------------------------|---------------|------------------------|
| Studies | | | |
| Critical Issues Analysis | H&B Solutions | Complete | Complete |
| Phase 1 ESA | ECS Mid-Atlantic | Complete | Complete |
| Wetlands | ECS Mid-Atlantic | Complete | Complete |
| Geotechnical | ECS Mid-Atlantic | Complete | Complete |
| Basic Habitat | ECS Mid-Atlantic | Complete | Complete |
| Forest Delineation | ECS Mid-Atlantic | Complete | Complete |
| Aerial Topography/LIDAR | Quantum Spatial | Complete | Complete |
| Glint/Glare Analysis | Timmons Group | Complete | Complete |
| Permits and Consultations | | | |
| Wetlands Determination | MD Dept of the Environment | Complete | Complete |
| Aviation/glare | FAA & MD Dept of Transportation | Complete | Complete |
| Historical properties | MD Historic Trust | Complete | Complete |
| Maryland threatened and endangered species | MD Dept of Natural Resources | Complete | Complete |
| US threatened and endangered species | US Fish & Wildlife Service | In Progress | Apr-21 |
| Garrett County Permits and Inspections Div. Consultation | Garrett County | In Progress | Mar-21 |
| Maryland Certificate of Public Convenience and Necessity | MD Public Service Commission | Submit Mar-21 | Nov-21 |
| Garrett County Grading, Timbering, Building, E&S | Garrett County | Submit Q2-21 | Nov-21/Dec-21 |

Project Conceptual Plan



Project Benefits

- ◆ Major private infrastructure investment (>\$200 million)
- ◆ New local tax base with opportunity to shape revenue to provide long term benefit to Garrett County
- ◆ 14-18 months of construction
 - ✓ *150 to 200 jobs during the construction phase*
 - ✓ *Supporting work in engineering, environmental surveying, site preparation and construction*
 - ✓ *Local businesses will benefit from increased commerce from the project and workers*





- ◆ Repurposes a former coal strip mine and adds to Garrett County's energy diversity
- ◆ Expands renewable resources, sustains local environmental quality and helps combat global climate change
- ◆ Will deliver enough electricity for about 30,000 average Maryland households—the entirety of Garrett County—and portions of surrounding counties
- ◆ Reduction in CO₂ emissions per year, the equivalent of taking 50,000 average cars off the road

Contact Us

John Hafner Project Developer

Office: (781) 817-8977

Cell: (617) 543-3886

jhafner@cpv.com

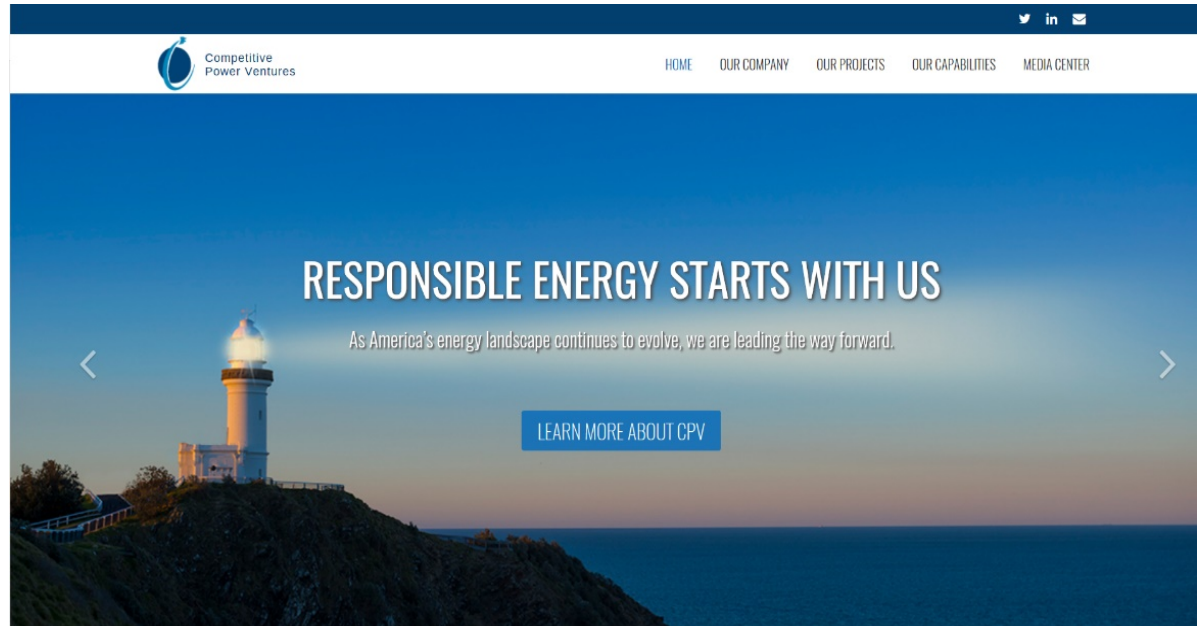
Ryan Lockhart Project Developer

Office: (781) 952-5977

Cell: (617) 347-6861

rlockhart@cpv.com

Competitive Power Ventures
50 Braintree Hill Office Park
Suite 300
Braintree, MA 02184



Visit our website at
www.cpv.com

