




Garrett County
**Local Roadway
Safety Plan**



Acknowledgements

This project was funded by a Grant from MDOT's Highway Safety Office



ZERO DEATHS
MARYLAND

— Highway Safety Office —

MDOT
MARYLAND DEPARTMENT
OF TRANSPORTATION
MOTOR VEHICLE
ADMINISTRATION



Statewide Safety Plan

Aligned with Maryland's Strategic Highway Safety Plan (2021-2025) [Link](#)



Purpose of the Plan

Reduce injuries and fatalities on our roadways.

- Align with Maryland's Strategic Highway Safety Plan (SHSP)
- Address specific safety concerns unique to Garrett County
- Utilize data-driven approaches to identify high-risk areas
- Implement a mix of behavioral and infrastructure improvements
- Engage community stakeholders and gather public input
- Secure additional funding through grants for ongoing safety projects
- Promote a culture of safety and responsibility among all road users
- Collaborate with MD Highway Safety Office for support and resources





Our Process

1

Analyze Data: •Collect and analyze crash data from the past 5 years •Identify high-risk areas and prevalent crash types •Use GIS mapping to visualize crash hotspots •Determine key contributing factors and trends

2

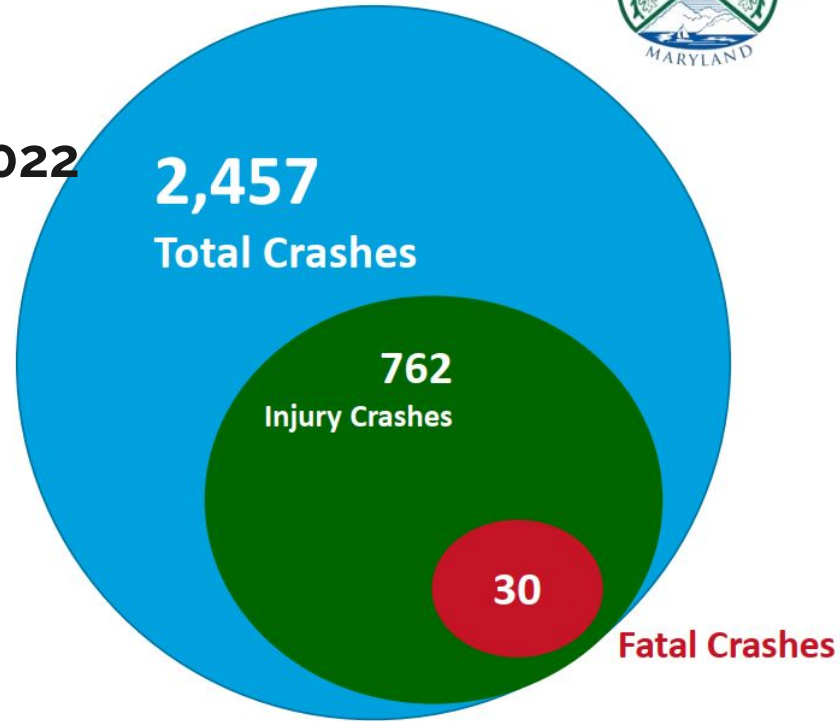
Agency Input: •Engage with local agencies Sheriff, Fire & EMS, Health Department, School System, Planning, Roads Department and use the Traffic Advisory Committee as a steering committee with representatives from stakeholder groups •Review existing planning documents and policies •Develop safety strategies and countermeasures

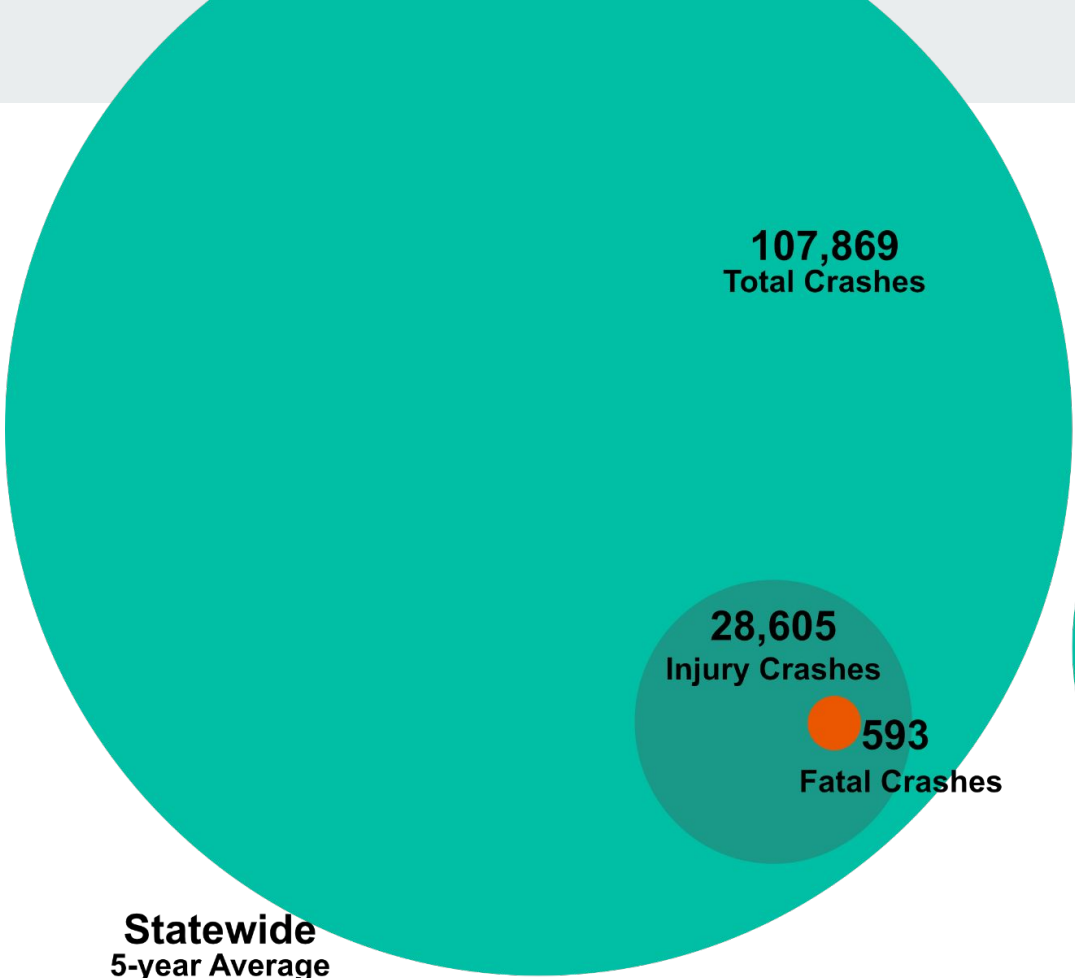
3

Community Engagement: •Gather input from community members and stakeholders •Conduct public meetings and workshops for feedback •Provide opportunities for residents to share their safety concerns •Incorporate public feedback into the final plan

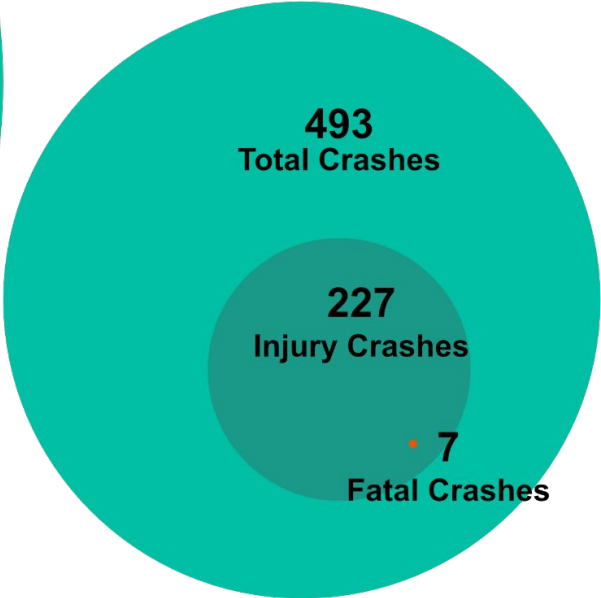


**Total Crashes:
January 1, 2018 to December 31, 2022**





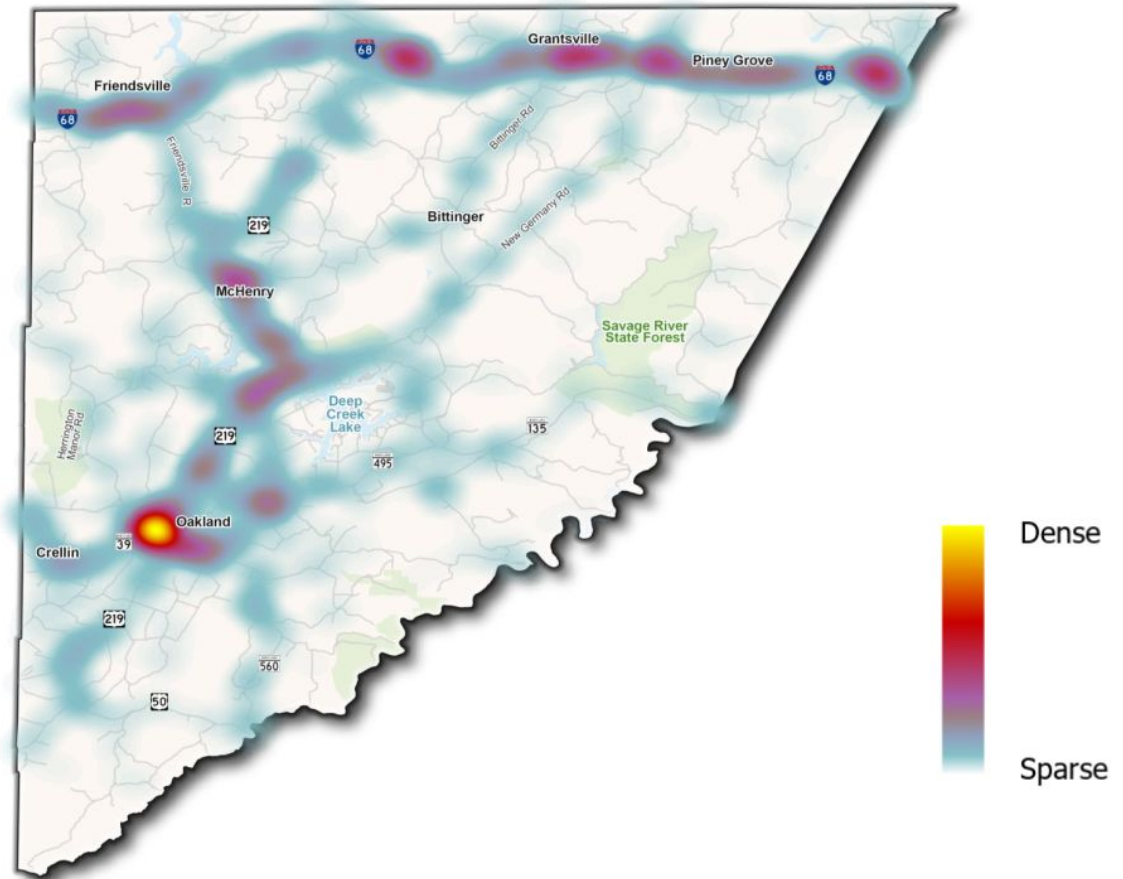
Statewide
5-year Average
2019- 2023



Garrett County
5-year Average
2019- 2023

— — —

All Crashes: 2018 - 2023



Crashes on Allegany & Garrett County Roads: 2018 - 2022



ANIMAL INVOLVED

Allegany Garrett

223 303



VULNERABLE USERS*

85 21

Allegany Garrett

*Includes other non-motorists, bicyclists, and pedestrians



IMPAIRED

234 164

Allegany Garrett



COMMERCIAL VEHICLES

309 235

Allegany Garrett



Allegany

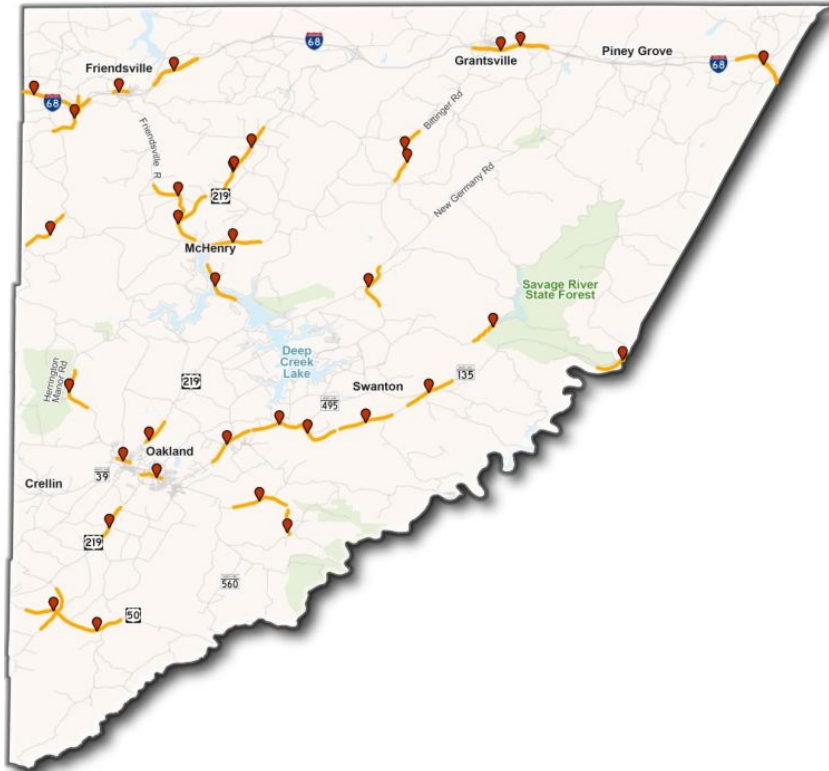
MON, WED, FRI

2 – 5 PM

Garrett

MON, FRI, SAT

2 – 6 PM



24% Local
76% State



Fatal Crash

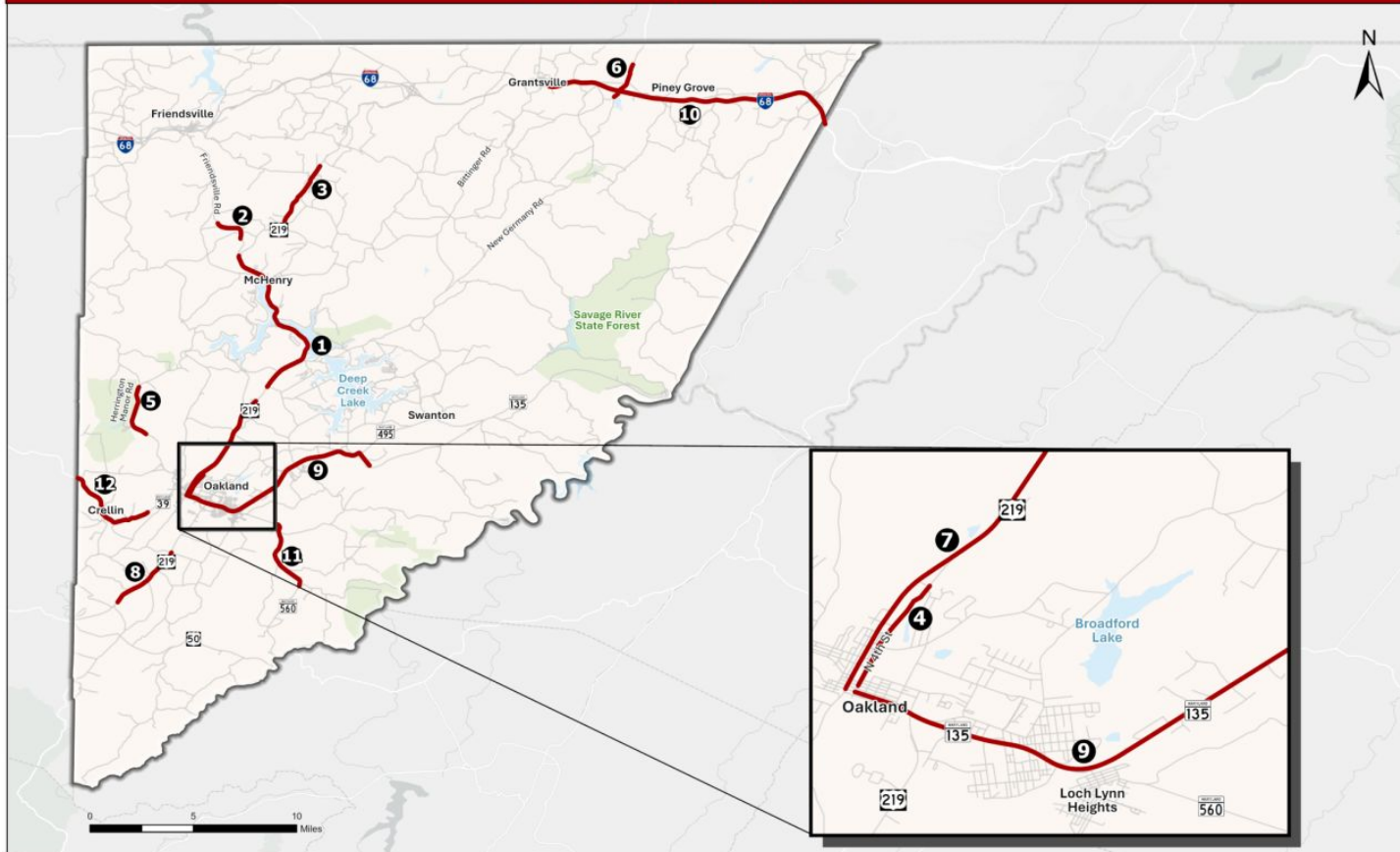


Roadway Where Fatal Crash Occurred

Source: Maryland State Police 2018 - 2023

Garrett County Fatal Crashes by Roadway Owner

Garrett County High Injury Network



Source: Maryland State Police 2018 - 2023

Label	Roadway	Fatal Crashes	Injury Crashes	Bike/Ped (Injury + Fatal)	Injury/Fatal Crashes per Mile	Segment Length (Miles)	Number of Travel Lanes	Speed Limit
1	US 219 (Sand Flat Rd to Friendsville Rd)	2	70	3	8.87	8.12	2/3	45
2	Friendsville Rd (N of Gap Run Rd to S of Hoyes Rd)	1	8	0	6.44	1.4	2	45
3	US 219 (Bumble Bee Rd to S of Pud Miller Rd)	3	11	1	4.66	3	2	40
4	Fourth St (Alder St to Penny Ln)	0	11	0	10.01	1.1	2	25
5	Herrington Manor Rd (Cranesville Rd to S of Herrington Ln)	1	5	0	2.36	2.54	2	45
6	Chestnut Ridge Rd (Meadow Lake Dr to Old Salisbury Rd)	0	9	0	5.13	1.75	2	40
7	US 219 (Oak St to Cherokee Ln)	1	51	2	9.78	5.32	2	30 / 55
8	US 219 (Paul Friend Rd to Sunnyside Rd)	1	15	0	5.02	3.18	2	50
9	MD 135 (4th St to B&O Railroad)	3	56	1	6.95	8.49	2	40
10	I-68 (E of MD 495 to East County Boundary)	2	78	0	6.94	11.53	8	70. Trucks 45
11	MD 560 (Doctor Tolson Rd to White Church Steyer Rd)	0	14	0	4.05	3.46	2	50
12	MD 39 (Crellin)	0	18	0	4.41	4.08	2	50

Source: Maryland State Police 2018 - 2023

Leading Causes and Contributing Factors of Crashes

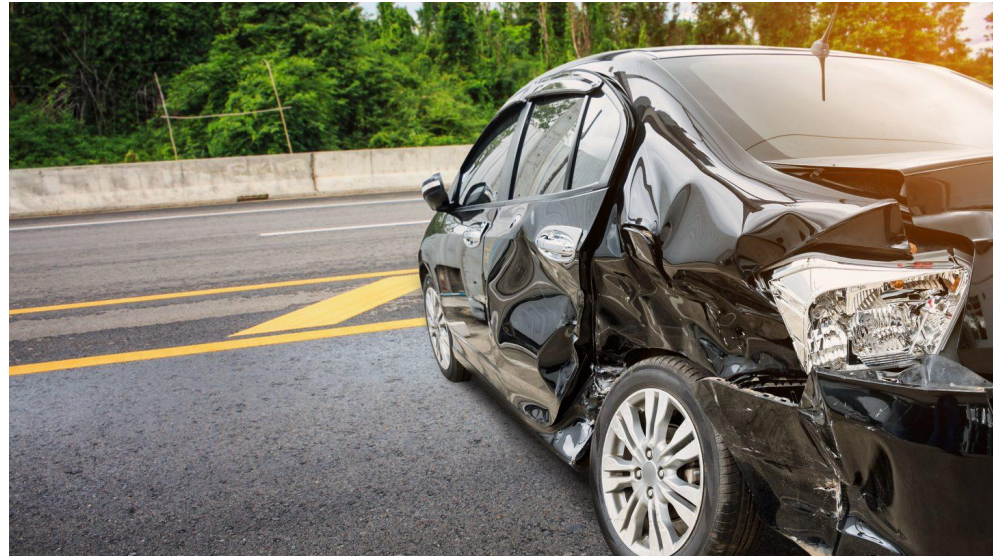
Behavioral factors: primary causes

Driving under the influence of alcohol or drugs

Distracted driving

Speeding and reckless driving

Enforcement and education are crucial



A close-up photograph of a person's hand resting on a steering wheel. The hand is wearing a blue watch with a metal link bracelet and a red ribbed wristband. The background is blurred, showing bokeh lights in shades of purple, blue, and yellow, suggesting a nighttime driving scene. The text is overlaid on the lower-left portion of the image.

Emphasis Areas

Strategies to Eliminate Roadway Deaths and Serious Injuries in Garrett County

Reduce the Risk of Roadway Departure and Head-on Collisions

Conduct roadway safety audits on High Injury Network

Implement low-cost safety countermeasures

Seek funding through the Safe Streets for All program

Develop a pedestrian safety plan for MD 135 corridor



Address Safety Issues of Rural, Mountainous Communities

Utilize FHWA's Wildlife Crossings Pilot Program (WCPP)

Support volunteer fire and rescue companies

Address winter weather challenges

Enhance emergency response capacity



Speeding, Aggressive, and Distracted Driving

Reduce posted speeds along the High Injury Network

Form a speed enforcement task force

Consider speed enforcement cameras

Strict adjudication for egregious speeding cases



Protect Vulnerable Roadway Users

Build out the bicycle and pedestrian network

Develop a safety plan for the MD 135 corridor

Invest in quick-build safety measures

Document and improve roadway/trail crossings





Engaging Garrett County

1

Planning Commission: Presentation August 7, 2024 at 1:30pm

2

Commissioners' Meeting: Presentation September 3, 2024 at 4:00pm

3

Share Comments:

Email: swigfield@garrettcounty.md.gov

by September 11, 2024





Thank you.
Questions & Comments?